



TOWNSHIP of HOPEWELL
MERCER COUNTY

201 WASHINGTON CROSSING – PENNINGTON ROAD
TITUSVILLE, NEW JERSEY 08560-1410

PROJECT / APPLICATION

BLOCK:

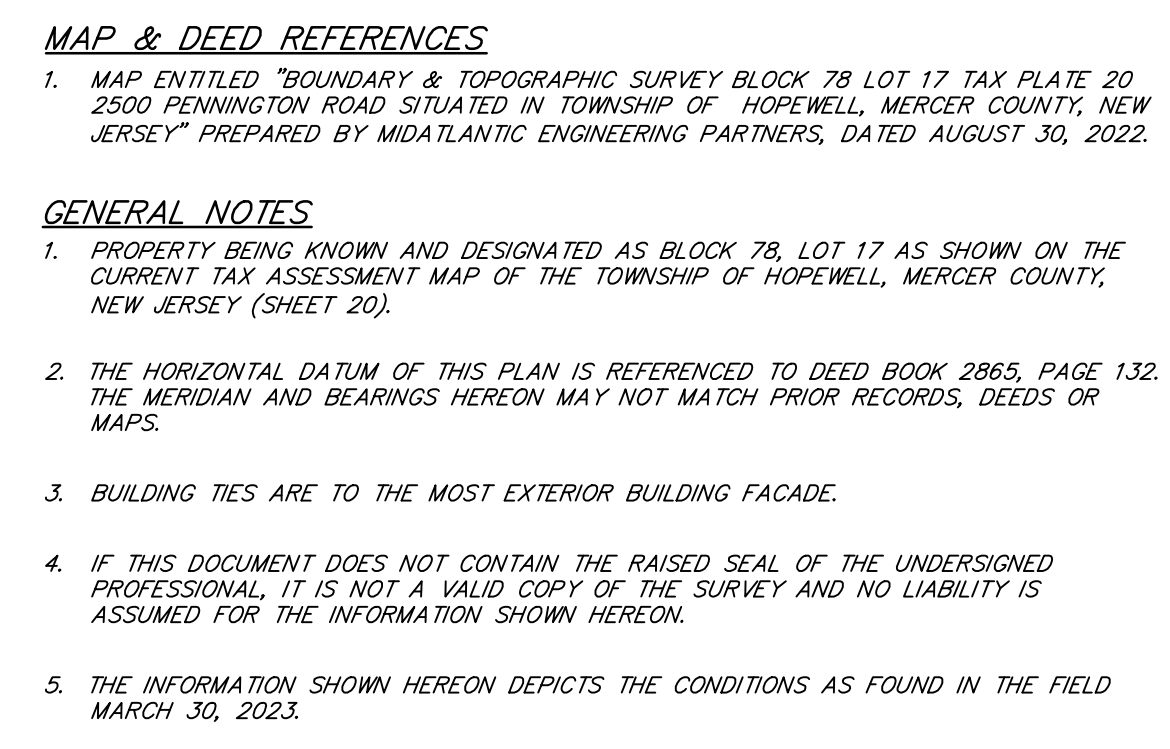
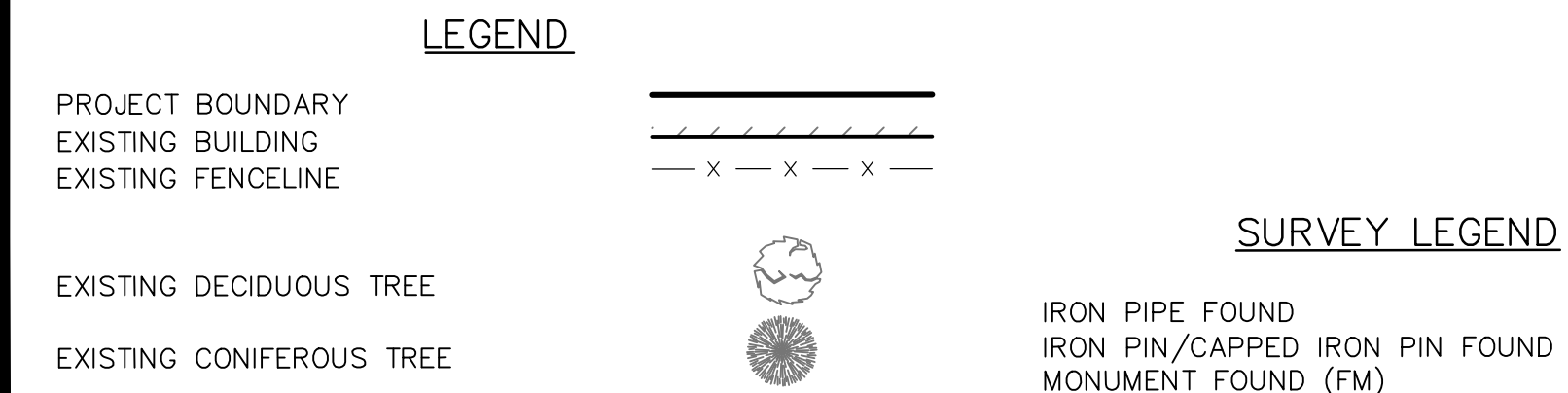
LOT:

ADDRESS:

PROJECT NAME:

PLANS

TREE SURVEY & REMOVAL PLAN



Trees To Be Removed within the Limit of Disturbance shown
All trees counted are in good condition, trees that are dead were not included in the plant count.
Species to be removed are oak, maple, pine, red cedar and black cherry.

* Trees within sample area 2,500 SF. Sanitary corridor area is 5,500 SF, therefore apply a 2.2 ratio to the number of trees to be removed.

** Tree totals reflect quantities after subtracting trees which contribute toward the first 150" DBH tree removal in accordance with Tree Replacement Plan 12-4.9 b.1.

(Per Ordinance Section 12-4.9 Tree Replacement Plan)

(Per Ordinance Section 17-89 Landscaping)

** Does not include an additional 75 evergreen trees provided for buffer area plantings.

Peggy L. Steinhauser Date 11/22/23

 Peggy L. Steinhauser, L.L.A.
 LICENSED LANDSCAPE ARCHITECT

[illegible]