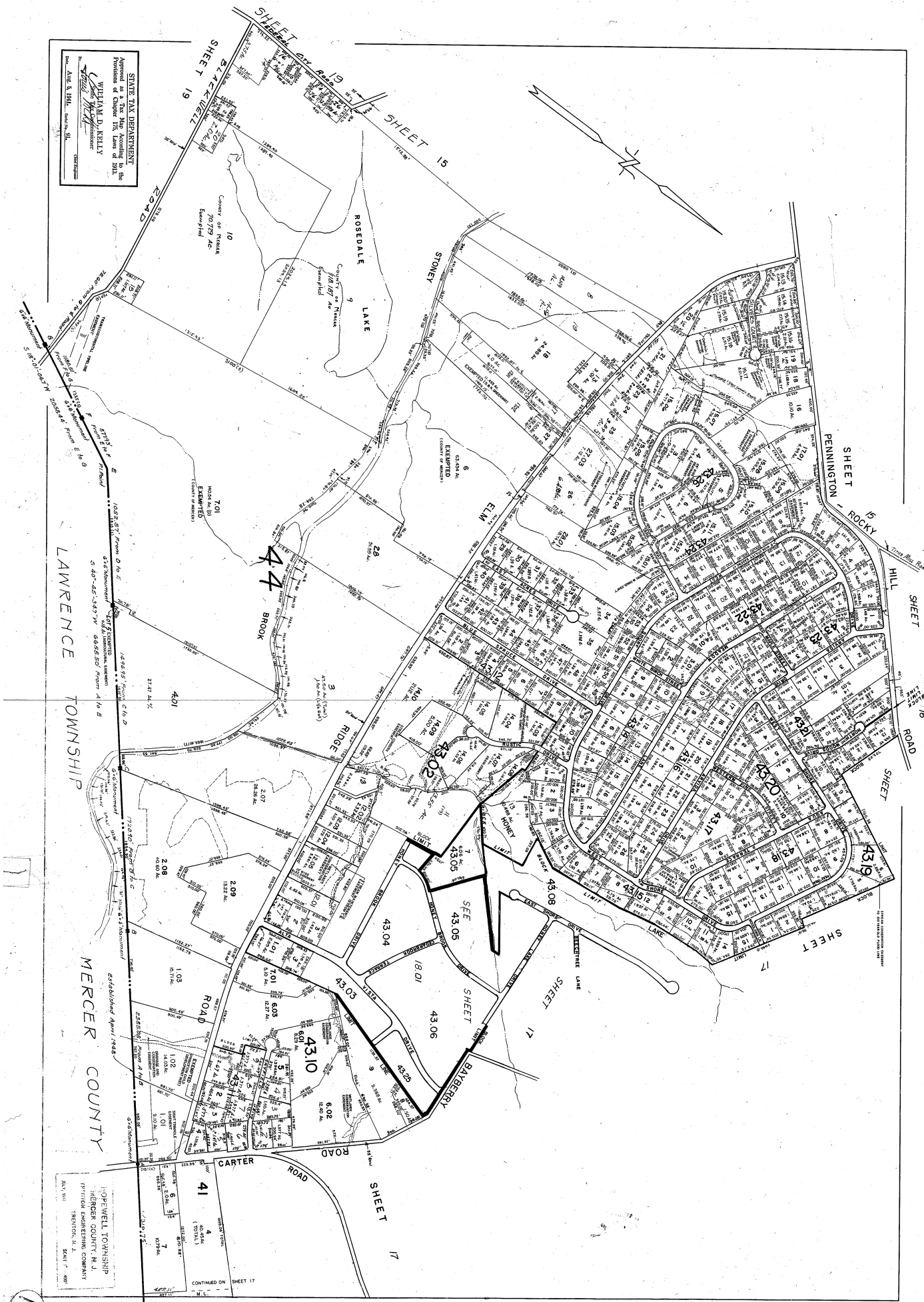


STATE TAX DEPARTMENT  
 Approved as a Tax Map according to the  
 provisions of Chapter 175, Laws of 1924.  
 WILLIAM D. KELLY  
 State Tax Assessor  
 Date: May 8, 1934.



HOPEWELL TOWNSHIP  
 MERCER COUNTY, N. J.  
 GEORGE W. HARRIS  
 CIVIL ENGINEERING COMPANY  
 TRENTON, N. J.  
 SCALE 1" = 400'