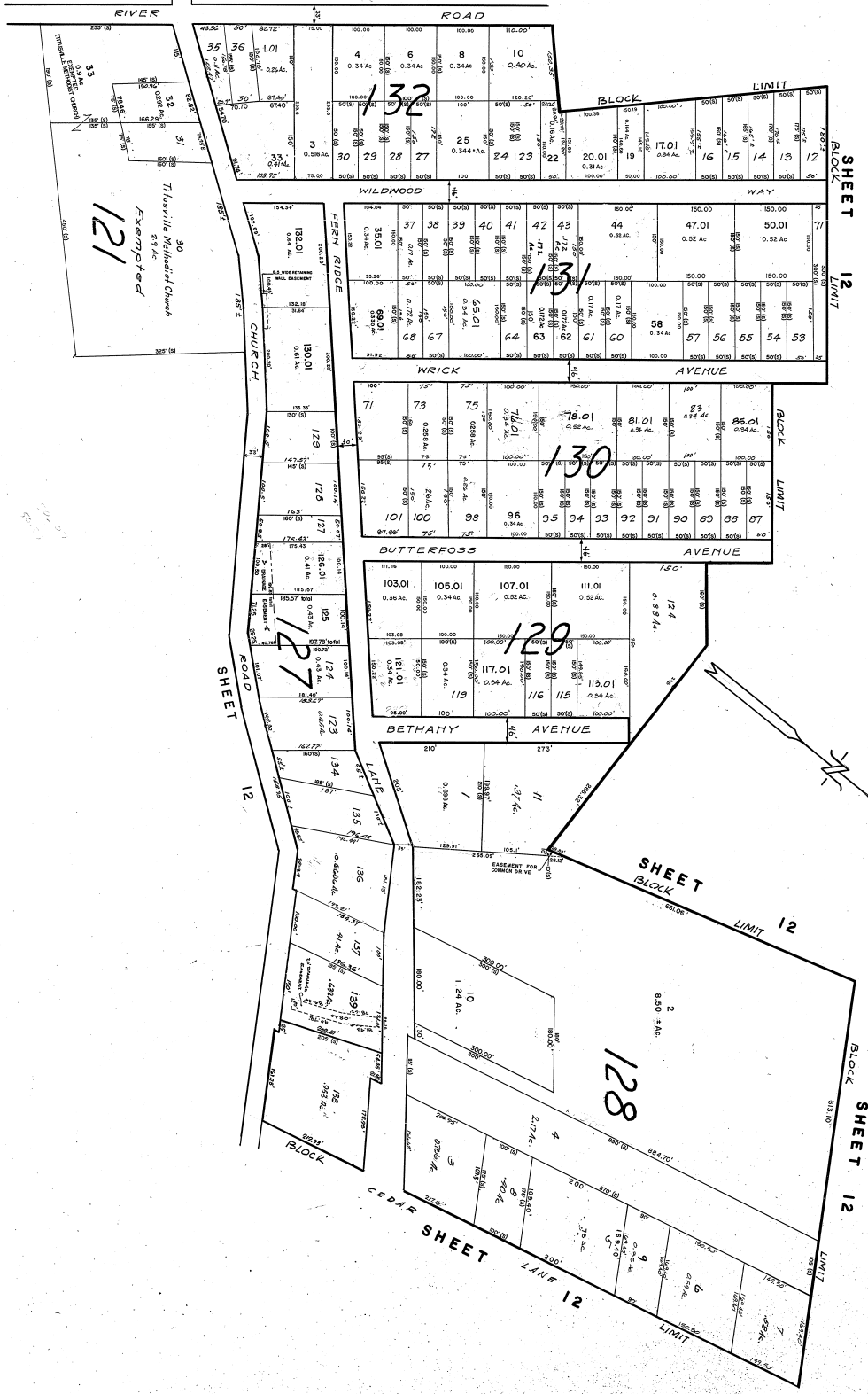


STATE TAX DEPARTMENT
 Assessment of the Real Estate Tax for the Year 1983
 Approved by the Board of Assessors on October 15, 1982
WILLIAM D. KELLY
 State Tax Commissioner
 State Tax Department
 100 North 17th Street, Harrisburg, PA 17103
 Date: April 3, 1983, Serial No. 101

SEE SHEET 12.03



HOPEWELL TOWNSHIP
 MERCER COUNTY, N.J.
 TRISTON ENGINEERING COMPANY
 2001
 TRENTON, N.J. 08611
 DATE: 1-1-83