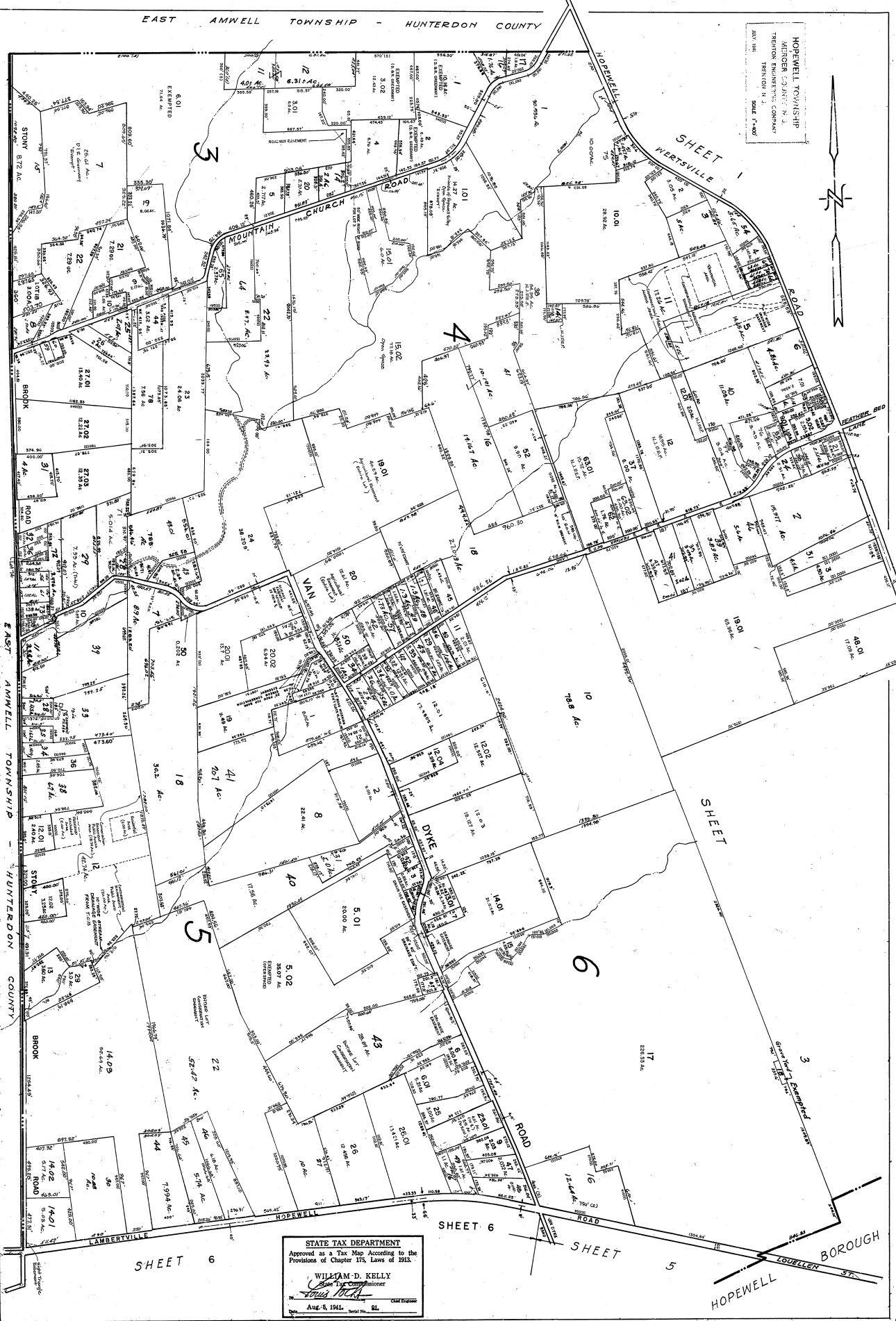
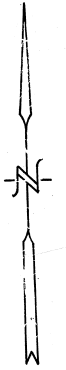


EAST AMWELL TOWNSHIP - HUNTERDON COUNTY

HOPWELL TOWNSHIP  
MEIGER, CASSETT & J.  
TERRON ENGINEERING COMPANY  
TRENTON, N. J.  
SCALE 1"=400'



STATE TAX DEPARTMENT  
Approved as a Tax Map According to the  
Provisions of Chapter 175, Laws of 1913.  
WILLIAM D. KELLY  
State Tax Commissioner  
JAMES W. BROWN  
Aug. 5, 1941. Serial No. 61.

2

2